

## GAME RULES

All symbols pay from left to right on adjacent reels starting from the leftmost reel.



6 - 100  
5 - 50  
4 - 30  
3 - 15



6 - 50  
5 - 30  
4 - 15  
3 - 8



6 - 40  
5 - 20  
4 - 10  
3 - 5



6 - 30  
5 - 15  
4 - 8  
3 - 5



6 - 25  
5 - 12  
4 - 8  
3 - 5



6 - 20  
5 - 10  
4 - 6  
3 - 4



6 - 15  
5 - 8  
4 - 5  
3 - 3



6 - 15  
5 - 8  
4 - 5  
3 - 3



6 - 10  
5 - 6  
4 - 4  
3 - 2



6 - 10  
5 - 6  
4 - 4  
3 - 2

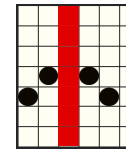
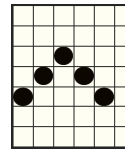


This is the SCATTER symbol.  
It appears only during the base game on all reels.



This symbol is WILD and substitutes for all symbols except for SCATTER.  
It appears on reels 2, 3, 4, 5 and 6.

### Ways to win



Wins awarded for left to right adjacent symbol combinations of any size.  
Reels 1 to 6 can have up to 7 symbols. In total the maximum number of possible ways to win is 117649.

MEGAWAYS™ IS USED UNDER LICENCE FROM

## TUMBLE FEATURE

The TUMBLE FEATURE means that after every spin, winning combinations are paid and all winning symbols disappear. The remaining symbols fall to the bottom of the screen and the empty positions are replaced with new symbols coming from above.

The number of symbols on a reel after tumbling can randomly increase to a random number for reels that had at least one winning symbol

Tumbling will continue until no more winning combinations appear as a result of a tumble.

All wins are added to the player's balance after all the tumbles resulted from a base spin have been played.

### FREE SPINS

Hit 4, 5 or 6 or more SCATTER symbols to trigger the FREE SPINS feature and win 15, 20 or 25 free spins respectively.

During the round, each win is multiplied by a number equal to the total amount of symbols that exploded in the current tumble.

The feature cannot be retriggered.

Special reels are in play during the round.

### MAX WIN

The maximum win amount is limited to 10,000x bet in both base game and free spins. If the total win of a FREE SPINS round reaches 10,000x bet the round immediately ends, win is awarded and all remaining free spins are forfeited

### BUY FREE SPINS

The FREE SPINS round can be instantly triggered from the base game by buying it.

There are two options to buy the FREE SPINS:

Pay 100x total bet to trigger the STANDARD FREE SPINS feature with 4 to 6 SCATTERS symbols randomly.  
Pay 300x total bet to trigger the DOUBLE MULTIPLIER FREE SPINS feature in which all wins are multiplied by double the number of exploded symbols in the current tumble.

When buying the FREE SPINS round 4, 5 or 6 SCATTER symbols are guaranteed to hit randomly on the triggering spin.

## VOLATILITY

High volatility games pay out less often on average but the chance to hit big wins in a short time span is higher.

All symbols pay from left to right on selected paylines. All wins are multiplied by bet per line.

Free spins and bonus wins are added to the payline win.

All values are expressed as actual wins in coins.

Only the highest win is paid per line.

When winning on multiple paylines, all wins are added to the total win.

Free Spins round win is awarded to the player after the round completes.

Free Spins round total win in the history contains the whole win of the cycle.

The theoretical RTP of this game is 95.04%



The RTP of the game when using "BUY FREE SPINS" is 95.07%

The RTP of the game when using "BUY DOUBLE MULTIPLIER FREE SPINS" is 95.02%

MINIMUM BET: R3.00  
MAXIMUM BET: R3,600.00

SPACE and ENTER buttons on the keyboard can be used to start and stop the spin.  
Malfunction voids all pays and plays.


## HOW TO PLAY

Click the  or  buttons to change the bet value and open the bet menu.  
Select the bet you want to use in the game.

Press the SPIN button to play.

## MAIN GAME INTERFACE



 opens the SETTINGS menu that contains settings which affect the way the game is being played.

 - cycles through spin speed settings, normal speed, quick spin and turbo spin.

 toggles sound and music on and off

 opens the Information page

CREDIT and BET labels show the current balance and current total bet.  
Click on the labels to switch between coins view and cash view.

 and  change up or down the current bet and open the bet menu, where you can change the bet denominations.

 starts the game

 opens the automatic play menu.

Click the  button again to stop it.

## SETTINGS MENU

QUICK SPIN – Selects the Quick Spin setting for game reels to start automatically and stop as soon as released

INTRO SCREEN – toggles the introductory screen on and off

AMBIENT – toggles the ambient sound and music in the game on and off

SOUND FX – toggles the game's sound effects on and off

GAME HISTORY – opens the game history page

## INFORMATION SCREEN

 and  scroll between information pages

 closes the information screen

## BET MENU

The bet menu shows the bet multiplier available in the game, and the current total bet in both coins and cash.

Use the  and  buttons in the BET and COIN VALUE fields to change the values.

The maximum win amount is limited to 10000X bet. If the total win of a round reaches 10000X bet the round immediately ends, win is awarded up to the cap and all remaining features are forfeited.

## AUTOPLAY

Click on the buttons showing the number of possible auto-spins to start Autoplay

SKIP SCREENS option auto-skips the feature introduction and end screens after a short period of time